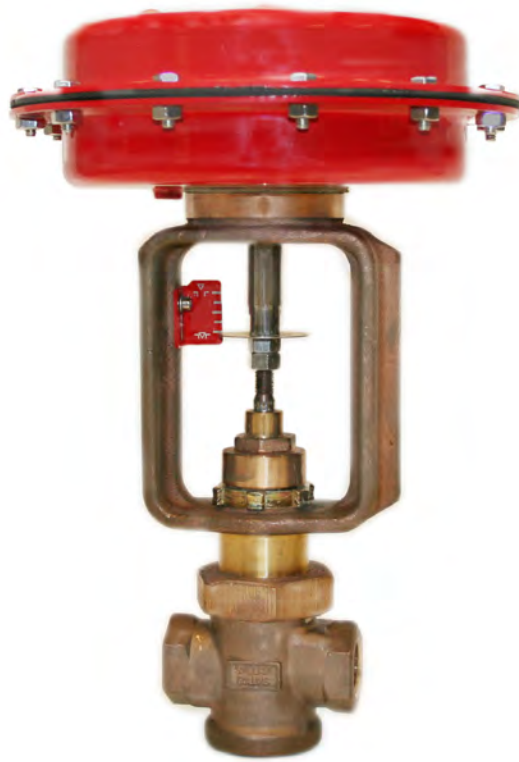




aerospace
climate control
electromechanical
filtration
fluid & gas handling
hydraulics
pneumatics
process control
sealing & shielding



Sinclair Collins® M Series

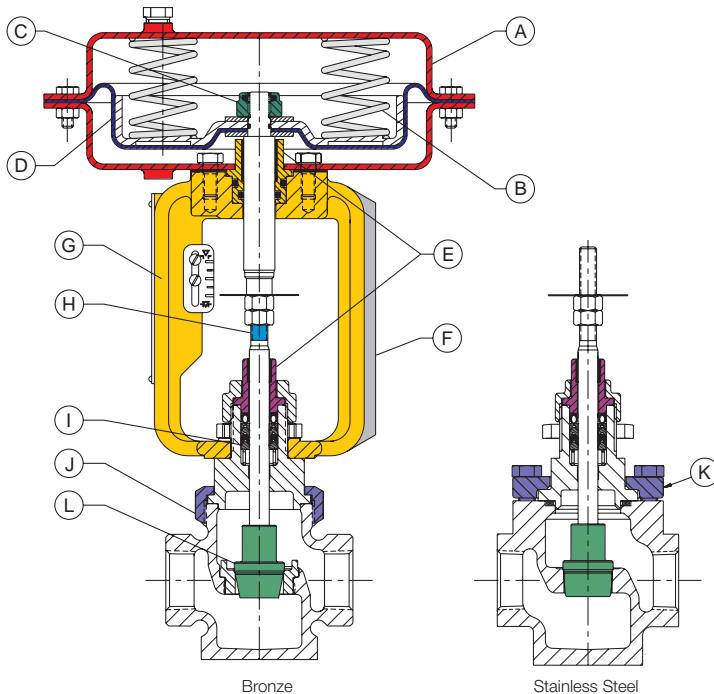
Process control valves for a variety of applications requiring the control of steam, gas, liquids or chemicals.



ENGINEERING YOUR SUCCESS.

Sinclair Collins Valves: Designed for High Performance

For over 50 years, Sinclair Collins has been designing and manufacturing process control valves for a variety of industries. The rugged design and reliability of the M Series modulating control valves make them ideally suited for a variety of applications requiring the control of steam, gas, liquids or chemicals. All components must meet our high performance specifications and quality control standards. Prior to shipment, every valve is fully tested to assure the quality that is expected from Sinclair Collins.



- (D) Nylon-reinforced, molded EPDM rolling style diaphragm provides ease of maintenance and uniform thrust throughout the valve stroke.
- (E) Dual stem guides with integral bearings for maximum alignment and longer life.
- (F) Nemur mounting rail for accessory mounting.
- (G) Yoke is made of cast bronze for rugged construction and long service life. Stainless steel valves use the same quality yoke with particle/silicone resin coating for superior wash down service and is FDA approved for incidental food contact.
- (H) Extended threads on stem allow for easy adjustment to accommodate a wide range of inlet pressures.
- (I) Engineered and manufactured by Parker Hannifin, the combination of stainless steel filled PTFE seals and carbon filled PTFE seals provide optimum sealing, low friction and long life for a wide variety of temperatures and services.
- (J) Bronze valve with union nut retention of the bonnet allows for servicing without removal from the installation.
- (K) Stainless steel valve with bolted flange construction allows for easy servicing without removal from the installation.
- (L) Plugs are hardened stainless steel for maximum protection against erosive and corrosive services with Class IV shutoff.

Features

- (A) Actuators in sizes 37 and 64 provide for a wide range of operating requirements.
- (B) Multiple-spring design reduces valve height.
- (C) Field reversible from "air-to-open" to "air-to-close" without disassembling the valve body.

WARNING

FAILURE OR IMPROPER SELECTION OR IMPROPER USE OF THE PRODUCTS AND/OR SYSTEMS DESCRIBED HEREIN OR RELATED ITEMS CAN CAUSE DEATH, PERSONAL INJURY AND PROPERTY DAMAGE.

This document and other information from Parker Hannifin Corporation, its subsidiaries and authorized distributors provide product and/or system options for further investigation by users having technical expertise. It is important that you analyze all aspects of your application, including consequences of any failure, and review the information concerning the product or system in the current product catalog. Due to the variety of operating conditions and applications for these products or systems, the user, through its own analysis and testing, is solely responsible for making the final selection of the products and systems and assuring that all performance, safety and warning requirements of the application are met.

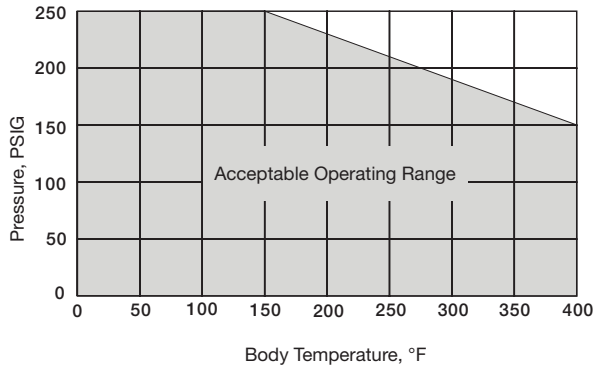
The products described herein, including without limitation, product features, specifications, designs, availability and pricing, are subject to change by Parker Hannifin Corporation and its subsidiaries at any time without notice.



Technical Specifications

- Body sizes 1/2", 3/4", 1", 1 1/4", 1 1/2", 2"
- -40°F to 400°F (-40°C to 204°C) media temperature range
- Actuator is field reversible, air to open, air to close
- Rolling style diaphragm provides uniform thrust
- Two actuator sizes: 37, 64. Maximum 35 PSI. Actuator to be vented to 0 PSI for shutoff.
- Stem diameter 7/16"
- Stem travel (stroke) 0.75" all sizes
- Multi-spring, low-profile actuators offer a 12 PSI control band.
- Hard seat meets Class IV leakage standards
- Valves are factory calibrated for maximum operating pressure and 100% tested.

Body Pressure/Temperature Ratings



Materials of Construction

Part Name	Standard Material
Valve Body	Cast bronze ASTM B62
Plug, Hard Seat	17-4 stainless steel equal % trim
Seat	17-4 stainless steel, replaceable
Packing Nut	Cast bronze ASTM B62
Stem Packing	Combination of stainless steel filled PTFE and carbon filled PTFE seals
Bonnet	Brass ASTM B16
Packing Follower	Brass with integral bearing
Steam Bearings	Engineered proprietary polymer
Yoke	Cast bronze, ASTM B62
Actuator Cover	Stamped steel with epoxy powder coated finish, stainless steel fasteners
Diaphragm	Molded EPDM reinforced with nylon fabric
Springs	Zinc plated music wire

Flow Capacity

Valve Size	Cv Trim Size	Cv	% Stroke									
			10%	20%	30%	40%	50%	60%	70%	80%	90%	100%
1/2"	6	Cv	0.30	0.50	0.60	0.70	1.00	1.50	2.20	2.90	4.20	6.3
3/4"	8		0.40	0.50	0.70	1.10	1.70	2.30	4.10	5.90	7.30	8.0
1"	13		0.50	0.80	1.30	1.90	2.50	3.60	6.50	9.0	11.10	13.0
1-1/4"	20		0.8	1.7	2.4	3.8	5.1	6.3	9.3	14.1	16.4	20.0
1-1/2"	27		0.9	1.7	2.8	4.8	7.1	12.1	17.5	21.8	24.4	27.0
2"	50		1.6	3.1	5.2	9.7	20.5	28.4	35.5	43.5	49.5	52.7

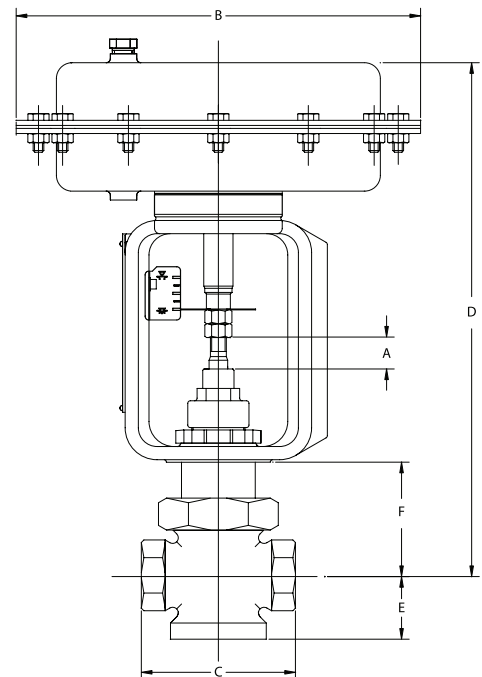
Actuator Range

Air to Open Valves						
Set Distance, Dimension "A"	0.75	0.81	0.88	0.94	1.00	1.06
Pilot Pressure in Actuator at Which Valve Begins to Open	3	4	5	6	7	8
Pilot Pressure in Actuator at Which Valve is Fully Open	15	16	17	18	19	20

Model Number	Port Size	Actuator Size	Cv, FLOW Capacity	Maximum System Shut Off Pressure (psi)					
				0-110	111-140	141-170	171-200	201-230	231-250
M314-2201	1/2	37	6.0	0-110	111-140	141-170	171-200	201-230	231-250
M314-3201	3/4	37	8	0-110	111-140	141-170	171-200	201-230	231-250
M315-4201	1	64	13	0-140	141-180	181-220	221-250	-	-
M315-5201	1 1/4	64	20.0	0-90	91-120	121-150	151-180	181-210	211-240
M315-6201	1 1/4	64	27.0	0-70	71-90	91-120	121-140	141-160	161-180
M315-7201	2	64	50	-	0-50	51-70	71-80	81-90	91-110

Air to Close Valves						
Set Distance, Dimension "A"	1.87	1.87	1.87	1.87	1.87	1.87
Pilot Pressure in Actuator at Which Valve Begins to Close	3	3	3	3	3	3
Pilot Pressure Required in Actuator for Valve to Shut Off	18	19	20	21	22	23

Port Size	Port Size	Actuator Size	Cv, FLOW Capacity	Maximum System Shut Off Pressure (psi)					
				0-110	111-140	141-170	171-200	201-230	231-250
M324-2201	1/2	37	6.0	0-110	111-140	141-170	171-200	201-230	231-250
M324-3201	3/4	37	8	0-110	111-140	141-170	171-200	201-230	231-250
M325-4201	1	64	13	0-140	141-180	181-220	221-250	-	-
M325-5201	1 1/4	64	20.0	0-90	91-120	121-150	151-180	181-210	211-240
M325-6201	1 1/4	64	27.0	0-70	71-90	91-120	121-140	141-160	161-180
M325-7201	2	64	50	-	0-50	51-70	71-80	81-90	91-110



- Notes: 1. All values are based on flow under seat.
2. Actuator to be vented to 0 PSI for shutoff.
3. Modulating valves are not intended for shut-off service

Dimensional Data

Millimeter equivalent of inch dimensions given in ().

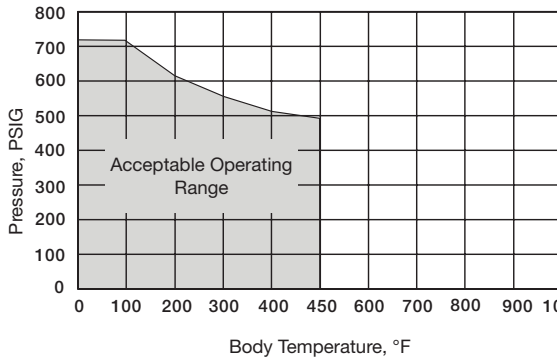
Body Size	A (Set Distance)	B		C	D		E	F
		37	64		37	64		
1/2"	See chart above	9.5	11.87	3.62	12.03	13.0	1.50	2.66
		(241.3)	(301.5)	(91.9)	(305.6)	(330.2)	(38.1)	(67.6)
3/4"	See chart above	9.5	11.87	3.62	12.03	13.0	1.50	2.66
		(241.3)	(301.5)	(91.9)	(305.6)	(330.2)	(38.1)	(67.6)
1"	See chart above	9.5	11.87	4.12	12.03	13.0	1.75	2.66
		(241.3)	(301.5)	(104.6)	(305.6)	(330.2)	(44.5)	(67.6)
1-1/4"	See chart above	9.5	11.87	5.38	12.1	13.06	2.25	2.73
		(241.3)	(301.5)	(136.7)	(307.3)	(331.7)	(57.2)	(69.3)
1-1/2"	See chart above	9.5	11.87	5.38	12.1	13.06	2.25	2.73
		(241.3)	(301.5)	(136.7)	(307.3)	(331.7)	(57.2)	(69.3)
2"	See chart above	n/a	11.87	7.5	n/a	13.99	3.06	3.65
			(301.5)	(190.5)		(355.3)	(77.7)	(92.7)



Technical Specifications

- Body sizes 1/2", 1", 1½", 2"
- -40°F to 450°F (-40°C to 232°C) media temperature range.
- Actuator is field reversible, air to open, air to close
- Rolling style diaphragm provides uniform thrust
- Two actuator sizes: 37, 64. Maximum 35 PSI. Actuator to be vented to 0 PSI for shutoff.
- Stem diameter 7/16"
- Stem travel (stroke) 0.75" all sizes
- Multi-spring, low-profile actuators offer a 12 PSI control band.
- Hard seat meets Class IV leakage standards
- Valves are factory calibrated for maximum operating pressure and 100% tested.

Body Pressure/Temperature Ratings



Materials of Construction

Part Name	Standard Material
Valve Body	300# Class investment cast 316 stainless steel body per ANSI B16.34.
Plug, Hard Seat	17-4 stainless steel equal % trim
Seat	Integrally machined into valve body
Packing Nut	Investment cast 303 stainless steel
Stem Packing	Combination of stainless steel filled PTFE and carbon filled PTFE seals
Bonnet	Stainless steel type 316
Bonnet Flange	investment cast 316 stainless steel secured with 18-8 stainless steel bolts
Bonnet Gasket	18-8 spiral wound gasket with graphite filler
Packing Follower	Stainless steel type 316 with integral bearing
Steam Bearings	Engineered proprietary polymer
Yoke	Cast bronze, ASTM B62 with stainless steel coating FDA approved for incidental food contact
Actuator Cover	Stamped steel with epoxy powder coated finish, stainless steel fasteners
Diaphragm	Molded EPDM reinforced with nylon fabric
Springs	Zinc plated music wire

Flow Capacity

Valve Size	Cv Trim Size	Cv	% Stroke									
			10%	20%	30%	40%	50%	60%	70%	80%	90%	100%
1/2"	6	Cv	0.40	0.50	0.70	1.00	1.60	2.10	3.30	4.60	5.70	6.0
1"	12		0.49	0.80	1.10	1.80	2.50	3.30	6.10	7.40	10.60	12.0
1-1/2"	27		1.2	2	3.3	5.4	7.6	12.3	18.9	24.1	26.3	27.0
2"	50		1.9	3.6	6.1	11.9	20.5	28	35.8	44.4	50.8	53.4

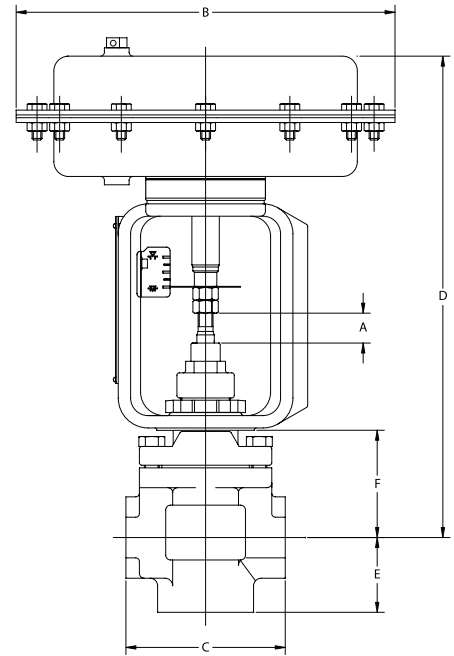
Actuator Range

Air to Open Valves						
Set Distance, Dimension "A"	0.75	0.81	0.88	0.94	1.00	1.06
Pilot Pressure in Actuator at Which Valve Begins to Open	3	4	5	6	7	8
Pilot Pressure in Actuator at Which Valve is Fully Open	15	16	17	18	19	20

Port Size	Port Size	Actuator Size	Cv, FLOW Capacity	Maximum System Shut Off Pressure (psi)					
				0-110	111-140	141-170	171-200	201-230	231-250
M314-2211	1/2	37	6	0-140	141-180	181-220	221-250	251-270	271-310
M315-4211	1	64	12	0-70	71-90	91-120	121-140	141-160	161-180
M315-6211	1 1/2	64	20, 27	-	0-50	51-70	71-80	81-90	91-110
M315-7211	2	64	50						

Air to Close Valves						
Set Distance, Dimension "A"	1.87	1.87	1.87	1.87	1.87	1.87
Pilot Pressure in Actuator at Which Valve Begins to Close	3	3	3	3	3	3
Pilot Pressure Required in Actuator for Valve to Shut Off	18	19	20	21	22	23

Port Size	Port Size	Actuator Size	Cv, FLOW Capacity	Maximum System Shut Off Pressure (psi)					
				0-110	111-140	141-170	171-200	201-230	231-250
M324-2211	1/2	37	6	0-140	141-180	181-220	221-250	251-270	271-310
M325-4211	1	64	12	0-70	71-90	91-120	121-140	141-160	161-180
M325-6211	1 1/2	64	20, 27	-	0-50	51-70	71-80	81-90	91-110
M325-7211	2	64	50						



- Notes: 1. All values are based on flow under seat.
2. Actuator to be vented to 0 PSI for shutoff.
3. Modulating valves are not intended for shut-off service

Dimensional Data

Millimeter equivalent of inch dimensions given in ().

Body Size	A (Set Distance)	B		C	D		E	F
		37	64		37	64		
1/2"		9.5	11.87	3.13	12.00	12.94	1.50	2.62
		(241.3)	(301.5)		(79.5)	(304.8)		
1"	See chart above	9.5	11.87	4.00	12.07	13.01	1.88	2.69
		(241.3)	(301.5)		(101.6)	(306.6)		
1-1/2"		9.5	11.87	5.00	13.11	14.05	2.44	3.73
		(241.3)	(301.5)	(127.0)	(333.0)	(356.9)	(62.0)	(94.7)
2"		n/a	11.87	7.50	n/a	14.96	3.50	4.62
			(301.5)		(190.5)	(380.0)		

OFFER OF SALE – FLUID CONTROL DIVISION

The items described in this document and other documents and descriptions provided by Parker Hannifin Corporation, its subsidiaries and its authorized distributors ("Seller") are hereby offered for sale at prices to be established by Seller. This offer and its acceptance by any customer ("Buyer") shall be governed by all of the following Terms and Conditions. Buyer's order for any item described in its document, when communicated to Seller verbally, or in writing, shall constitute acceptance of this offer. All goods, services or work described will be referred to as "Products".

- 1. Terms and Conditions.** Seller's willingness to offer Products, or accept an order for Products, to or from Buyer is subject to these Terms and Conditions or any newer version of the terms and conditions found on-line at www.parker.com/saleterms/. Seller objects to any contrary or additional terms or conditions of Buyer's order or any other document issued by Buyer.
- 2. Price Adjustments; Payments.** Prices stated on Seller's quote or other documentation offered by Seller are valid for 30 days, and do not include any sales, use, or other taxes unless specifically stated. Unless otherwise specified by Seller, all prices are F.O.B. Seller's facility payment is subject to credit approval and is due 30 days from the date of invoice or such other term as required by Seller's Credit Department, after which Buyer shall pay interest on any unpaid invoices at the rate of 1.5% per month or the maximum allowable rate under applicable law.
- 3. Delivery Dates; Title and Risk; Shipment.** All delivery dates are approximate and Seller shall not be responsible for any damages resulting from any delay. Regardless of the manner of shipment, title to any products and risk of loss or damage shall pass to Buyer upon placement of the products with the shipment carrier at Seller's facility. Unless otherwise stated, Seller may exercise its judgment in choosing the carrier and means of delivery. No deferment of shipment at Buyers' request beyond the respective dates indicated will be made except on terms that will indemnify, defend and hold Seller harmless against all loss and additional expense. Buyer shall be responsible for any additional shipping charges incurred by Seller due to Buyer's acts or omissions.
- 4. Warranty.** Seller warrants that the Products sold hereunder shall be free from defects in material or workmanship for a period of 2 years from the date of delivery to Buyer or 2,000 hours of normal use, whichever occurs first. Exception to this is the Angle Body Valve line has a 1 year warranty. The prices charged for Seller's products are based upon the exclusive limited warranty stated above, and upon the following disclaimer: **DISCLAIMER OF WARRANTY: THIS WARRANTY COMPRISES THE SOLE AND ENTIRE WARRANTY PERTAINING TO PRODUCTS PROVIDED HEREUNDER. SELLER DISCLAIMS ALL OTHER WARRANTIES, EXPRESS AND IMPLIED, INCLUDING MERCHANTABILITY AND FITNESS FOR A PARTICULAR PURPOSE.**
- 5. Claims; Commencement of Actions.** Buyer shall promptly inspect all Products upon delivery. No claims for shortages will be allowed unless reported to the Seller within 10 days of delivery. No other claims against Seller will be allowed unless asserted in writing within 30 days after delivery. Buyer shall notify Seller of any alleged breach of warranty within 30 days after the date the defect is or should have been discovered by Buyer. Any action based upon breach of this agreement or upon any other claim arising out of this sale (other than an action by Seller for an amount due on any invoice) must be commenced within 12 months from the date of the breach without regard to the date breach is discovered.
- 6. LIMITATION OF LIABILITY.** UPON NOTIFICATION, SELLER WILL, AT ITS OPTION, REPAIR OR REPLACE A DEFECTIVE PRODUCT, OR REFUND THE PURCHASE PRICE. **IN NO EVENT SHALL SELLER BE LIABLE TO BUYER FOR ANY SPECIAL, INDIRECT, INCIDENTAL OR CONSEQUENTIAL DAMAGES ARISING OUT OF, OR AS THE RESULT OF, THE SALE, DELIVERY, NON-DELIVERY, SERVICING, USE OR LOSS OF USE OF THE PRODUCTS OR ANY PART THEREOF, OR FOR ANY CHARGES OR EXPENSES OF ANY NATURE INCURRED WITHOUT SELLER'S WRITTEN CONSENT, EVEN IF SELLER HAS BEEN NEGLIGENT, WHETHER IN CONTRACT, TORT OR OTHER LEGAL THEORY. IN NO EVENT SHALL SELLER'S LIABILITY UNDER ANY CLAIM MADE BY BUYER EXCEED THE PURCHASE PRICE OF THE PRODUCTS.**
- 7. User Responsibility.** The user, through its own analysis and testing, is solely responsible for making the final selection of the system and Product and assuring that all performance, endurance, maintenance, safety and warning requirements of the application are met. The user must analyze all aspects of the application and follow applicable industry standards and Product information. If Seller provides Product or system options, the user is responsible for determining that such data and specifications are suitable and sufficient for all applications and reasonably foreseeable uses of the Products or systems.
- 8. Loss to Buyer's Property.** Any designs, tools, patterns, materials, drawings, confidential information or equipment furnished by Buyer or any other items which become Buyer's property, will be considered obsolete and may be destroyed by Seller after two consecutive years have elapsed without Buyer ordering the items manufactured using such property. Seller shall not be responsible for any loss or damage to such property while it is in Seller's possession or control.
- 9. Special Tooling.** A tooling charge may be imposed for any special tooling, including without limitation, dies, fixtures, molds and patterns, acquired to manufacture Products. Such special tooling shall be and remain Seller's property notwithstanding payment of any charges by Buyer. In no event will Buyer acquire any interest in apparatus belonging to Seller which is utilized in the manufacture of the Products, even if such apparatus has been specially converted or adapted for such manufacture and notwithstanding any charges paid by Buyer. Unless otherwise agreed, Seller shall have the right to alter, discard or otherwise dispose of any special tooling or other property in its sole discretion at any time.
- 10. Buyer's Obligation; Rights of Seller.** To secure payment of all sums due or otherwise, Seller shall retain a security interest in the goods delivered and this agreement shall be deemed a Security Agreement under the Uniform Commercial Code. Buyer authorizes Seller as its attorney to execute and file on Buyer's behalf all documents Seller deems necessary to perfect its security interest.
- 11. Improper use and Indemnity.** Buyer shall indemnify, defend, and hold Seller harmless from any claim, liability, damages, lawsuits, and costs (including attorney fees), whether for personal injury, property damage, patent, trademark or copyright infringement or any other claim, brought by or incurred by Buyer, Buyer's employees, or any other person, arising out of: (a) improper selection, improper application or other misuse of Products purchased by Buyer from Seller; (b) any act or omission, negligent or otherwise, of Buyer; (c) Seller's use of patterns, plans, drawings, or specifications furnished by Buyer to manufacture Product; or (d) Buyer's failure to comply with these terms and conditions. Seller shall not indemnify Buyer under any circumstance except as otherwise provided.
- 12. Cancellations and Changes.** Orders shall not be subject to cancellation or change by Buyer for any reason, except with Seller's written consent and upon terms that will indemnify, defend and hold Seller harmless against all direct, incidental and consequential loss or damage. Seller may change product features, specifications, designs and availability with notice to Buyer.
- 13. Limitation on Assignment.** Buyer may not assign its rights or obligations under this agreement without the prior written consent of Seller.
- 14. Force Majeure.** Seller does not assume the risk and shall not be liable for delay or failure to perform any of Seller's obligations by reason of circumstances beyond the reasonable control of Seller (hereinafter "Events of Force Majeure"). Events of Force Majeure shall include without limitation: accidents, strikes or labor disputes, acts of any government or government agency, acts of nature, delays or failures in delivery from carriers or suppliers, shortages of materials, or any other cause beyond Seller's reasonable control.
- 15. Waiver and Severability.** Failure to enforce any provision of this agreement will not waive that provision nor will any such failure prejudice Seller's right to enforce that provision in the future. Invalidation of any provision of this agreement by legislation or other rule of law shall not invalidate any other provision herein. The remaining provisions of this agreement will remain in full force and effect.
- 16. Termination.** Seller may terminate this agreement for any reason and at any time by giving Buyer thirty (30) days written notice of termination. Seller may immediately terminate this agreement, in writing, if Buyer: (a) commits a breach of any provision of this agreement (b) appointments a trustee, receiver or custodian for all or any part of Buyer's property (c) files a petition for relief in bankruptcy on its own behalf, or by a third party (d) makes an assignment for the benefit of creditors, or (e) dissolves or liquidates all or a majority of its assets.
- 17. Governing Law.** This agreement and the sale and delivery of all Products hereunder shall be deemed to have taken place in and shall be governed and construed in accordance with the laws of the State of Ohio, as applicable to contracts executed and wholly performed therein and without regard to conflicts of laws principles. Buyer irrevocably agrees and consents to the exclusive jurisdiction and venue of the courts of Cuyahoga County, Ohio with respect to any dispute, controversy or claim arising out of or relating to this agreement.
- 18. Indemnity for Infringement of Intellectual Property Rights.** Seller shall have no liability for infringement of any patents, trademarks, copyrights, trade dress, trade secrets or similar rights except as provided in this Section. Seller will defend and indemnify Buyer against allegations of infringement of U.S. patents, U.S. trademarks, copyrights, trade dress and trade secrets ("Intellectual Property Rights"). Seller will defend at its expense and will pay the cost of any settlement or damages awarded in an action brought against Buyer based on an allegation that a Product sold pursuant to this Agreement infringes the Intellectual Property Rights of a third party. Seller's obligation to defend and indemnify Buyer is contingent on Buyer notifying Seller within ten (10) days after Buyer becomes aware of such allegations of infringement, and Seller having sole control over the defense of any allegations or actions including all negotiations for settlement or compromise. If a Product is subject to a claim that it infringes the Intellectual Property Rights of a third party, Seller may, at its sole expense and option, procure for Buyer the right to continue using the Product, replace or modify the Product so as to make it noninfringing, or offer to accept return of the Product and return the purchase price less a reasonable allowance for depreciation. Notwithstanding the foregoing, Seller shall have no liability for claims of infringement based on information provided by Buyer, or directed to Products delivered hereunder for which the designs are specified in whole or part by Buyer, or infringements resulting from the modification, combination or use in a system of any Product sold hereunder. The foregoing provisions of this Section shall constitute Seller's sole and exclusive liability and Buyer's sole and exclusive remedy for infringement of Intellectual Property Rights.
- 19. Entire Agreement.** This agreement contains the entire agreement between the Buyer and Seller and constitutes the final, complete and exclusive expression of the terms of sale. All prior or contemporaneous written or oral agreements or negotiations with respect to the subject matter are herein merged.
- 20. Compliance with Law, U. K. Bribery Act and U.S. Foreign Corrupt Practices Act.** Buyer agrees to comply with all applicable laws and regulations, including both those of the United Kingdom and the United States of America, and of the country or countries of the Territory in which Buyer may operate, including without limitation the U. K. Bribery Act, the U.S. Foreign Corrupt Practices Act ("FCPA") and the U.S. Anti-Kickback Act (the "Anti-Kickback Act"), and agrees to indemnify and hold harmless Seller from the consequences of any violation of such provisions by Buyer, its employees or agents. Buyer acknowledges that they are familiar with the provisions of the U. K. Bribery Act, the FCPA and the Anti-Kickback Act, and certifies that Buyer will adhere to the requirements thereof. In particular, Buyer represents and agrees that Buyer shall not make any payment or give anything of value, directly or indirectly to any governmental official, any foreign political party or official thereof, any candidate for foreign political office, or any commercial entity or person, for the purpose of influencing such person to purchase products or otherwise benefit the business of Seller.



Parker Hannifin Corporation
Fluid Control Division
95 Edgewood Avenue
New Britain, CT 06051
phone 800 cparker
fax 860 827 2384
www.parker.com/fcd